

State of Wyoming Corner Record

(In compliance with the CORNER PERPETUATION AND FILING ACT, Wyoming Statutes, 1997 Section 33-29-140 et. seq., and the Rules and Regulations of the Board of Professional Engineers and Professional Land Surveyors)

Reverse side of this form may be used if more space is needed.

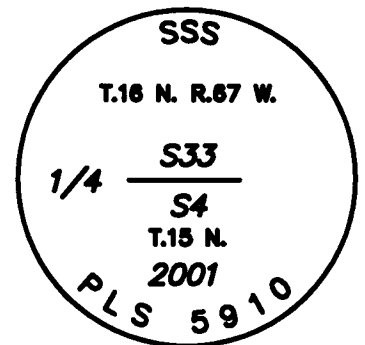
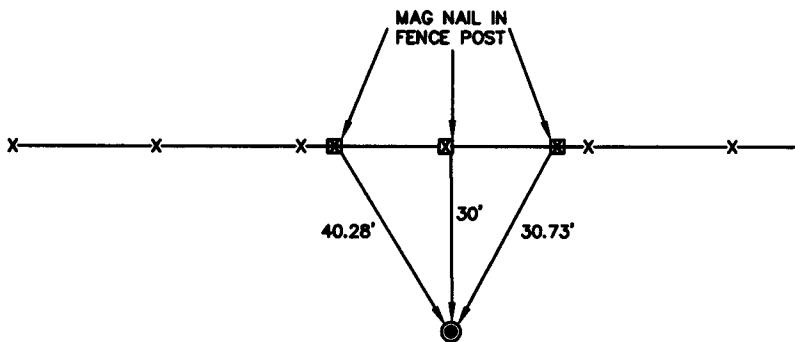
Record of original survey and citation of source of historical information (if corner is lost or obliterated). Description of corner monumentation evidence found and/or monument and accessories established to perpetuate the location of this corner. Sketch of relative location of monument, accessories, and reference points with course and distance to adjacent corner(s) (if determined in this survey). Method and rationale for reestablishment of lost or obliterated corner.

RECORD: 12 X 10 X 4

MONUMENT FOUND: FOUND REMNANTS OF BROKEN CONGLOMERATE SANDSTONE.

MONUMENT SET: SET A 2 1/2" ALUMINUM CAP BURIED STONE ALONGSIDE.

REFERENCES: REFERENCES ARE SHOWN BELOW. SEE REVERSE SIDE.



RECP #: 651891
 RECORDED 12/23/2014 AT 4:20 PM BK# 2422 PG# 383
 Debra K. Lathrop. CLERK OF LARAMIE COUNTY. WY PAGE 1 OF 2

Date of Field Work: 04/30/01

Office Reference: 01142

Monument Inscription

Cross Index Plat

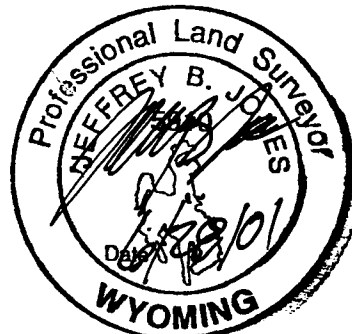
	1	2	3	4	5	6	7	8	9	10	11	12	13	14	15	16	17	18	19	20	21	22	23	24	25	
A											●															A
B	+	+	+	+	+	+	+	+	+	+	+	+	+	+	+	+	+	+	+	+	+	+	+	+	+	B
C	+	6	+	+	5	+	+	+	4	+	+	+	3	+	+	2	+	+	1	+	+	+	+	+	C	
D	+	+	+	+	+	+	+	+	+	+	+	+	+	+	+	+	+	+	+	+	+	+	+	+	D	
E	+	+	+	+	+	+	+	+	+	+	+	+	+	+	+	+	+	+	+	+	+	+	+	+	E	
F	+	+	+	+	+	+	+	+	+	+	+	+	+	+	+	+	+	+	+	+	+	+	+	+	F	
G	+	7	+	+	8	+	+	+	9	+	+	+	10	+	+	11	+	+	12	+	+	+	+	+	G	
H	+	+	+	+	+	+	+	+	+	+	+	+	+	+	+	+	+	+	+	+	+	+	+	+	H	
J	+	+	+	+	+	+	+	+	+	+	+	+	+	+	+	+	+	+	+	+	+	+	+	+	J	
K	+	+	+	+	+	+	+	+	+	+	+	+	+	+	+	+	+	+	+	+	+	+	+	+	K	
L	+	18	+	+	17	+	+	+	16	+	+	+	15	+	+	14	+	+	13	+	+	+	+	+	L	
M	+	+	+	+	+	+	+	+	+	+	+	+	+	+	+	+	+	+	+	+	+	+	+	+	M	
N	+	+	+	+	+	+	+	+	+	+	+	+	+	+	+	+	+	+	+	+	+	+	+	+	N	
O	+	+	+	+	+	+	+	+	+	+	+	+	+	+	+	+	+	+	+	+	+	+	+	+	O	
P	+	19	+	+	20	+	+	+	21	+	+	+	22	+	+	23	+	+	24	+	+	+	+	+	P	
Q	+	+	+	+	+	+	+	+	+	+	+	+	+	+	+	+	+	+	+	+	+	+	+	+	Q	
R	+	+	+	+	+	+	+	+	+	+	+	+	+	+	+	+	+	+	+	+	+	+	+	+	R	
S	+	+	+	+	+	+	+	+	+	+	+	+	+	+	+	+	+	+	+	+	+	+	+	+	S	
T	+	30	+	+	29	+	+	+	28	+	+	+	27	+	+	26	+	+	25	+	+	+	+	+	T	
U	+	+	+	+	+	+	+	+	+	+	+	+	+	+	+	+	+	+	+	+	+	+	+	+	U	
V	+	+	+	+	+	+	+	+	+	+	+	+	+	+	+	+	+	+	+	+	+	+	+	+	V	
W	+	+	+	+	+	+	+	+	+	+	+	+	+	+	+	+	+	+	+	+	+	+	+	+	W	
X	+	31	+	+	32	+	+	+	33	+	+	+	34	+	+	35	+	+	36	+	+	+	+	+	X	
Y	+	+	+	+	+	+	+	+	+	+	+	+	+	+	+	+	+	+	+	+	+	+	+	+	Y	
Z	+	+	+	+	+	+	+	+	+	+	+	+	+	+	+	+	+	+	+	+	+	+	+	+	Z	

Firm/Agency, Address

STEIL SURVEYING SERVICES LLC
 1102 WEST 19th STREET
 CHEYENNE WY 82001
 Telephone Number: (307) 634-7273

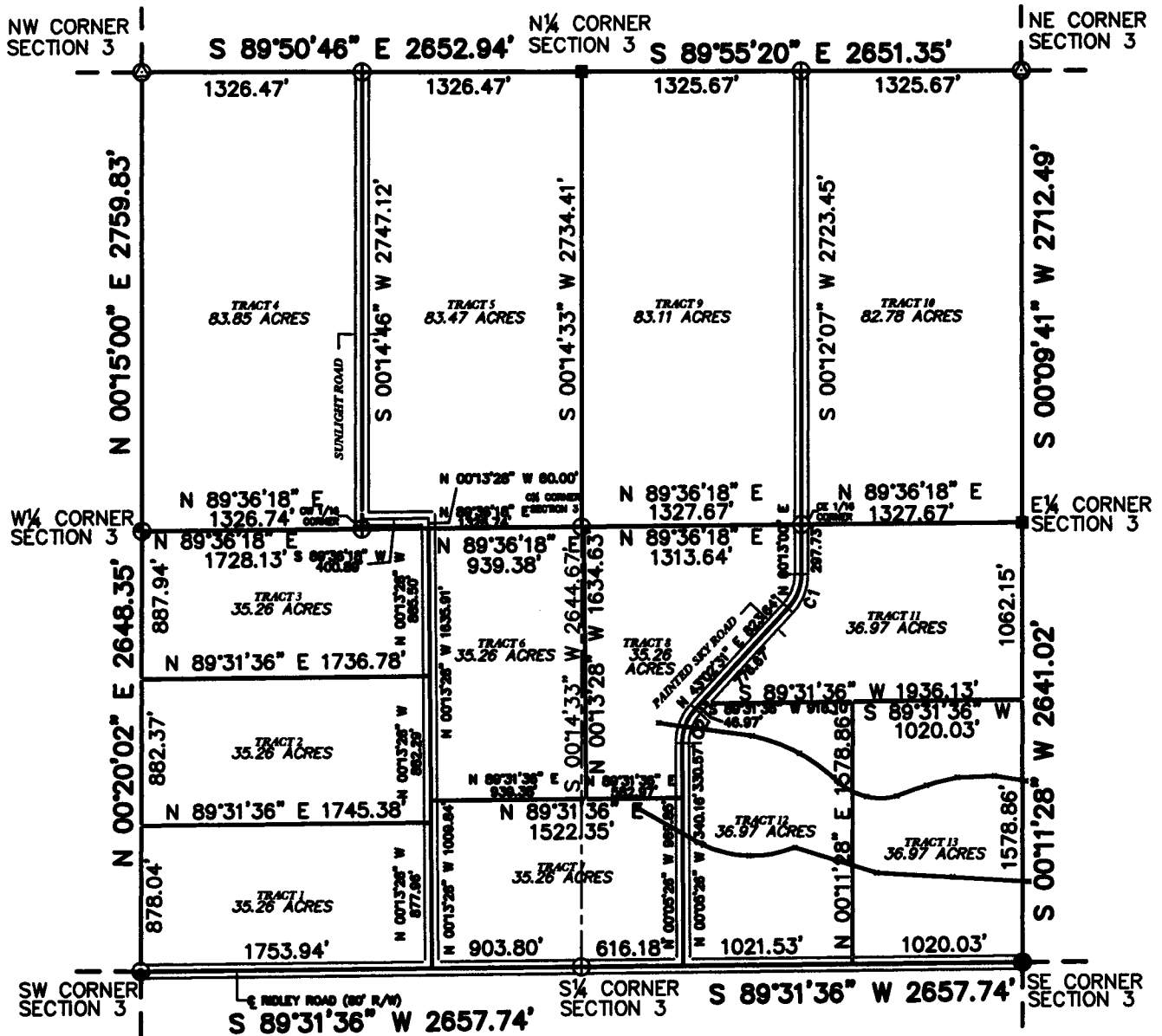
This corner record was prepared by me or under my direction and supervision.

SEAL & SIGNATURE



Corner Name N 1/4 Corner Section 4, T 15 N, R 67 W, 6th P.M.
 County: LARAMIE Wyoming

Cross-Index No.: A-11



LEGEND

- ⊕ SET 5/8" X 24" LONG REBAR WITH 2 1/2" ALUMINUM CAP STAMPED "SSS PLS 2500" AND APPROPRIATE DATA
- ⊙ SET 5/8" X 24" LONG REBAR WITH 3 1/4" ALUMINUM CAP STAMPED "SSS PLS 2500" AND APPROPRIATE DATA
- FOUND GLO STONE
- FOUND 1 1/2" ALUMINUM CAP BLANK
- ⊙ FOUND 2" ALUMINUM CAP STAMPED "LS 2927"
- ⊙ FOUND 5/8" X 24" LONG REBAR WITH 1 1/2" ALUMINUM CAP STAMPED "SSS PLS 2500"



1000 0 1000 2000



Scale: 1" = 1000'



RECP #: 651891

RECORDED 12/23/2014 AT 4:20 PM BK# 2422 PG# 384

Debra K. Lathrop, CLERK OF LARAMIE COUNTY, WY PAGE 2 OF 2